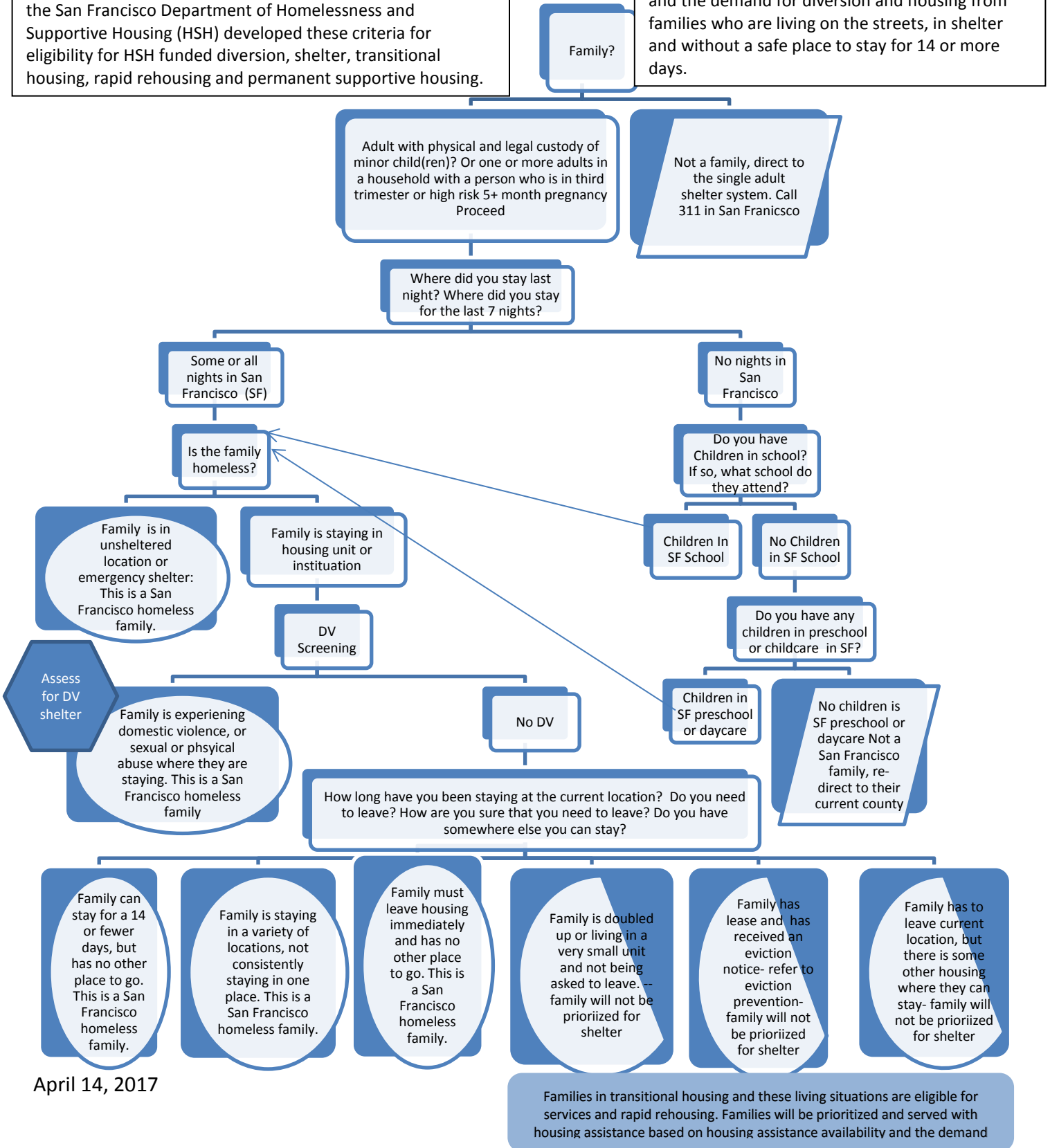


# San Francisco Homeless Family Triage Process

There are several definitions of homelessness used for families in San Francisco. There are not enough resources in San Francisco to offer shelter, and other resources to all families that meet one or more definition of homelessness, so the San Francisco Department of Homelessness and Supportive Housing (HSH) developed these criteria for eligibility for HSH funded diversion, shelter, transitional housing, rapid rehousing and permanent supportive housing.

In consultation with the San Francisco community, HSH will consider serving homeless families who are not prioritized according to these criteria in the future based on the availability of resources, and the demand for diversion and housing from families who are living on the streets, in shelter and without a safe place to stay for 14 or more days.



April 14, 2017

Families in transitional housing and these living situations are eligible for services and rapid rehousing. Families will be prioritized and served with housing assistance based on housing assistance availability and the demand