



DEPARTMENT OF
HOMELESSNESS AND
SUPPORTIVE HOUSING

TAY NAVIGATION CENTER
888 POST STREET

JANUARY 23, 2020

CHALLENGE

- ▶ San Francisco and The Bay Area are in the midst of a **housing affordability crisis**
- ▶ The unsheltered population has increased 19%
- ▶ Over 1,000 Transitional Aged Youth (ages 18-24) are experiencing homelessness in San Francisco,
- ▶ 83% of young people experiencing homelessness are unsheltered

- ▶ Navigation Centers are an asset to the community
 - ▶ Reduction of homelessness in the area
 - ▶ HSH designated outreach zone
- ▶ SFPD data analysis shows decrease or stable levels of crime
- ▶ No lines outside and needs met onsite including: social services, medical care, meals and laundry
- ▶ Designated outdoor space for smoking and pets
- ▶ Good Neighbor Policy

PROGRAM OVERVIEW

- ▶ The proposed TAY Navigation Center:
 - ▶ Dedicated space for young people, up to 75 beds
 - ▶ Non-profit provider who is familiar with the community
 - ▶ Case Management
 - ▶ Trauma-informed services and access to benefits
 - ▶ Allows for Property, Partners and Pets
 - ▶ 24/7 Access
 - ▶ No drug dealing or use onsite
 - ▶ Co-located with Goodwill

SITE OVERVIEW – 888 POST FROM THE CORNER OF POST AND HYDE STREETS



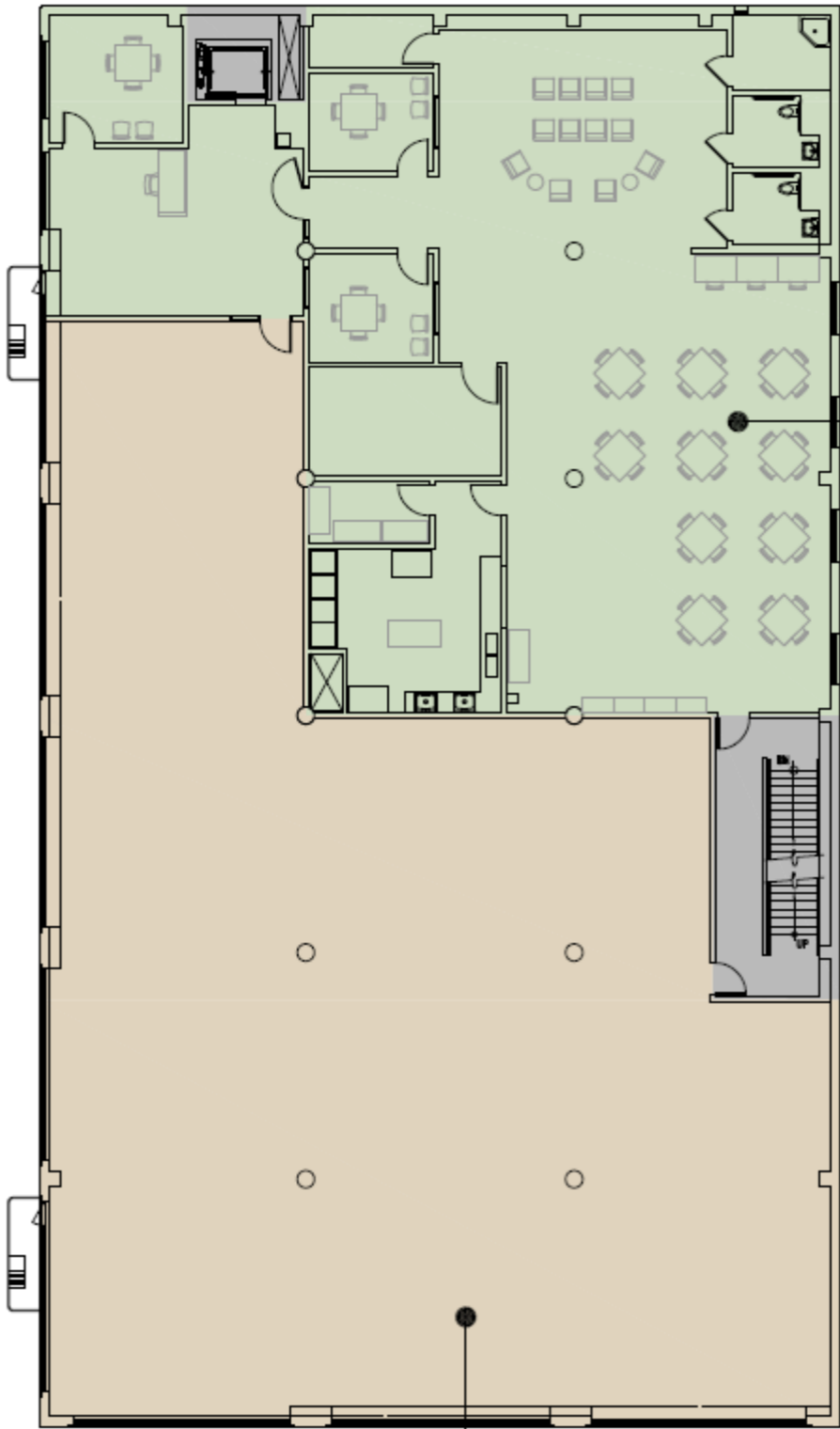
Goodwill vehicular entrance

SITE OVERVIEW – 888 POST FROM HYDE STREET



Navigation Center pedestrian access

SITE OVERVIEW – 888 POST STREET FLOOR PLAN (2ND FLOOR)

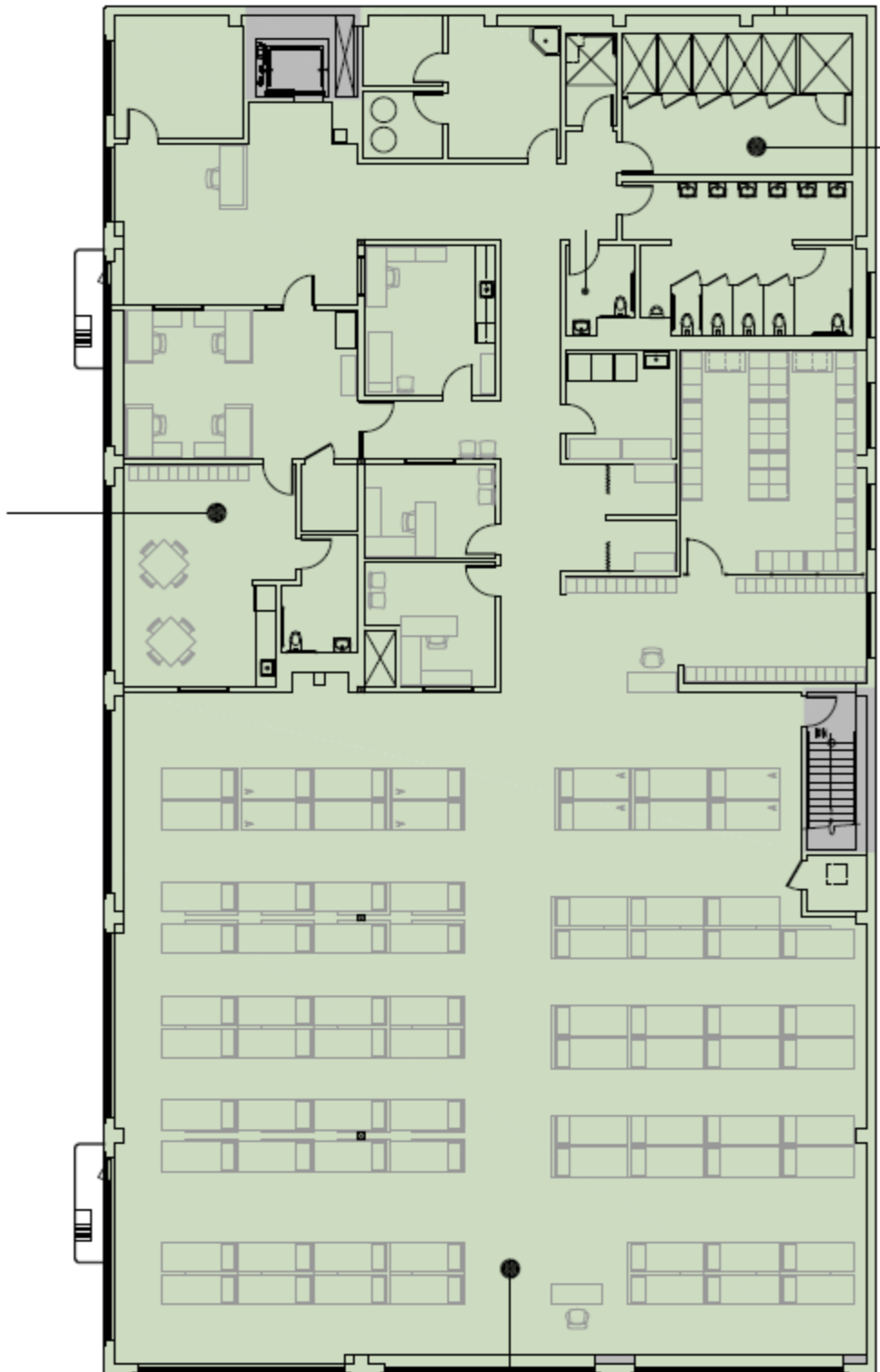


shelter
dining and
lounge

future City tenant

SITE OVERVIEW – 888 POST STREET FLOOR PLAN (3RD FLOOR)

shelter
services
(office)



restrooms
and showers

shelter dormitory

GOODWILL – 1ST FLOOR PARTNER

OUR MISSION: *to create second chances through training and the dignity of work.*

- Highly unique in workforce development approach - paid employment with benefits, industry training & customized career support
- Intentional about hiring individuals with barriers to employment

SHELTER + EMPLOYMENT:

- Deep experience w/ comprehensive youth employment programs (e.g. RAMP)
- Current primary employment partner in the Young Adult Court

CUSTOMIZED PROGRAMMING:

- Designated youth training space
- Collaboration with youth serving employers
- Utilization of Cognitive Behavioral Interventions (CBI)

EXPERIENCE WITH TAY:

- Young Adult Court
- Past 5 years:
 - Percent of TAY in our intensive career services has more than tripled



COMMUNITY STAKEHOLDERS

- ▶ Peter Jacobson, General Manager, Music City SF
- ▶ Chris Schulman, Executive Director, Lower Polk CBD

PUBLIC COMMENT



DEPARTMENT OF
HOMELESSNESS AND
SUPPORTIVE HOUSING