

Mayor

Homelessness Oversight Commission

Vacant Executive Secretary

Shireen McSpadden Executive Director

Bridget Badasow Commission Secretary

Shelter Monitoring Committee

Noelle Simmons Chief Deputy Director

Cynthia Nagendra Deputy Director of Planning

Gigi Whitley Deputy Director of Administration and Finance

Dee Rosado-Chan Deputy Director of Programs

Anthony Bush Chief Equity Officer

Emily Cohen Deputy Director of Communications and Legislative Affairs

Advanced Planning

Care Coordination

Data and Performance

Budget and Finance

Contracts

Facilities

Human Resources and Business Services

IT

ONE System

Real Estate

Coordinated Entry and Problem Solving

Housing Services

Street Outreach and Temporary Shelter

Program Compliance

Racial Equity Training

Racial Equity Action Plan

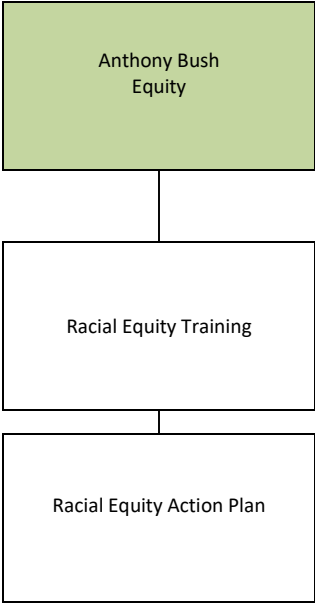
Communications and Community Engagement

Legislative Affairs

Anthony Bush
Equity

Racial Equity Training

Racial Equity Action Plan



Emily Cohen
Communications and Legislative
Affairs

Deborah Bouck
Communications/Press

Dylan Schneider
Legislative Affairs

Vacant
Community Engagement

