



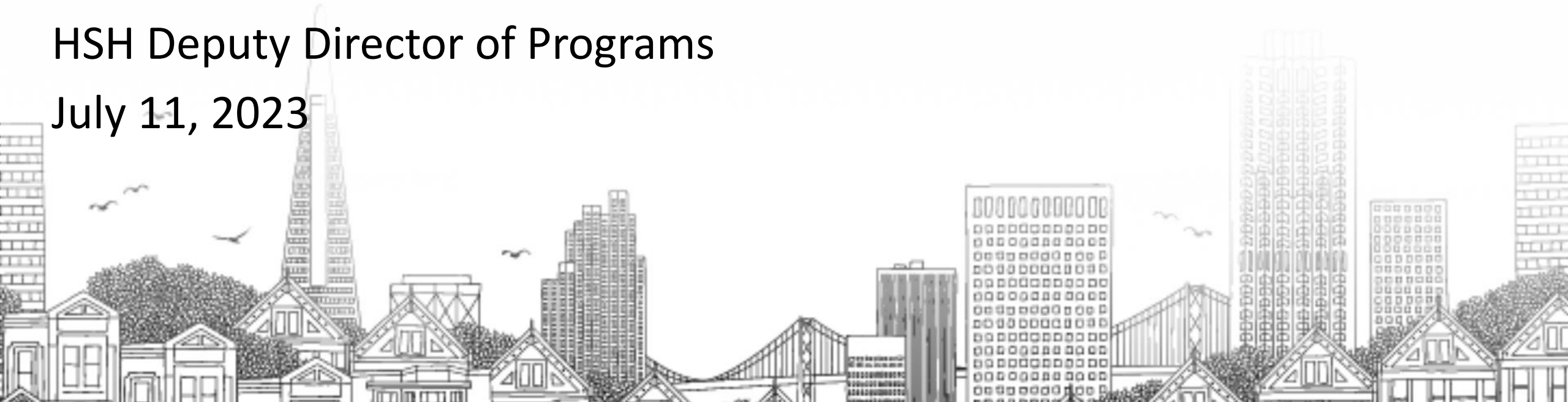
DEPARTMENT OF
HOMELESSNESS AND
SUPPORTIVE HOUSING

Lake Merced Pilot

Dee Rosado-Chan

HSH Deputy Director of Programs

July 11, 2023



Lake Merced Pilot

HSH was advised of parking removal on the east side of Lake Merced Blvd and of a Lake Merced Blvd. Quick Build

- Striping and parking removal will begin end of August
- 120 parked RVs and vehicles with unsheltered people experiencing homelessness and living in their vehicles in the Lake Merced area were at risk of being displaced
- The RV households were outreached and assessed by the S.F. Homeless Outreach Team (SFHOT), and Homelessness and Supportive Housing staff (HSH)

Lake Merced Data & Demographics

- . A total of 52 households were captured in Coordinated Entry from the community
- . 38 of the 52 households were assessed
 - . 14 heads of households need assessment
- . 9 households were Rapid Rehousing status
- . 9 Households were Permanent Supportive Housing status
- . 20 households were Problem Solving status
- . Working with households that also identified as Transitional Aged Youth (TAY)

Lake Merced Next Steps

- HSH will continue working with Working with Supervisor Myrna Melgar, MEDA, Coalition on Homelessness and S.F Municipal Transportation Agency
- Community Meeting with Residents and Providers
- SFHOT Outreach will continue to outreach the RV community



DEPARTMENT OF
HOMELESSNESS AND
SUPPORTIVE HOUSING

Questions?

Please email Cynthia.Nagendra@sfgov.org & dee.rosado-chan@sfgov.org with additional questions